



SYMMONS® Forza™

Kitchen Faucet S-2640

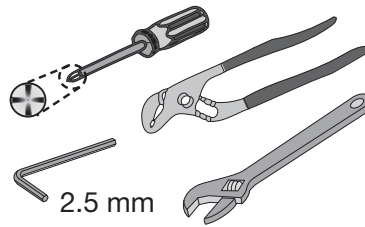
Installation and Service Instructions



Model Numbers

- S-2640..... Chrome finish
- S-2640-STN Satin Nickel finish
- S-2640-STS..... Stainless Steel finish

Tools & Materials



☎ Need Help?

Contact Symmons customer service at
 (800) 796-6667, (781) 848-2250
 Email: customerservice@symmons.com
 Monday - Friday 8:00 am - 7:30 pm EST

💻 Please check Symmons website
 for technical help, the latest product
 information and warranty policy.
www.symmons.com/service

Quick Install Guide *Forza Kitchen Faucet, S-2640*

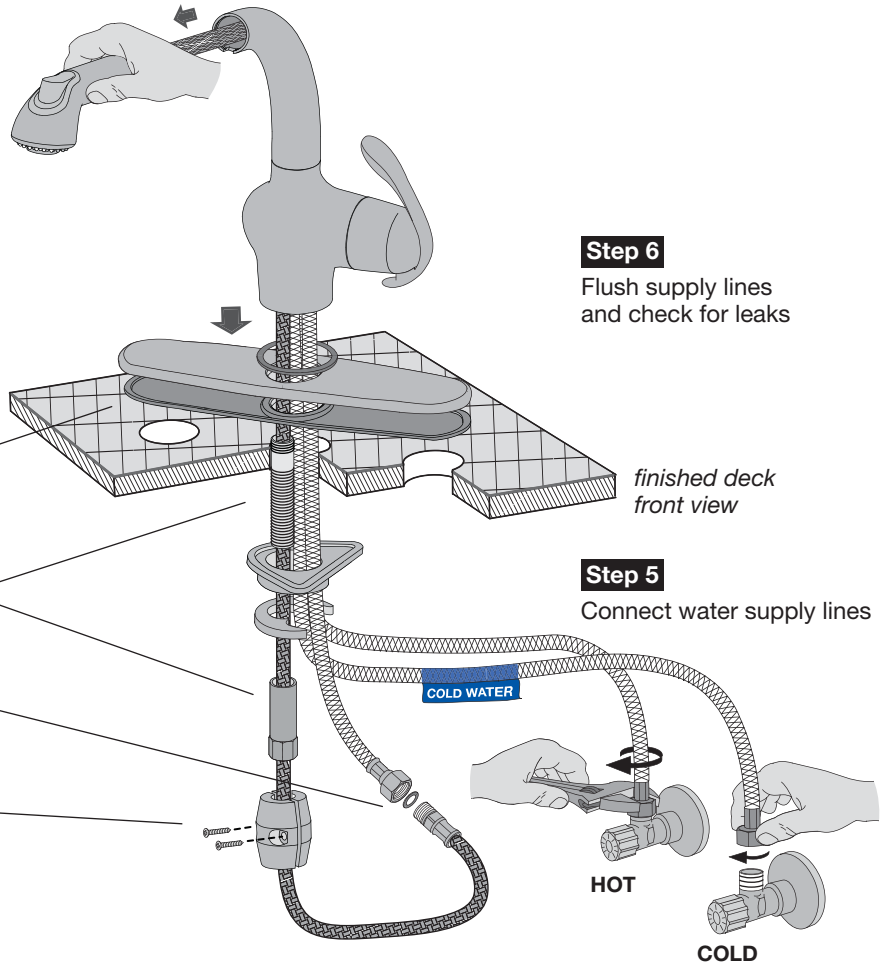


(optional) **Step 1**
 Place deck plate in position
 typically used to cover holes

Step 2
 Attach faucet assembly

Step 3
 Connect pull-out spout hose

Step 4
 Attach hose counterweight



Step 6
 Flush supply lines
 and check for leaks

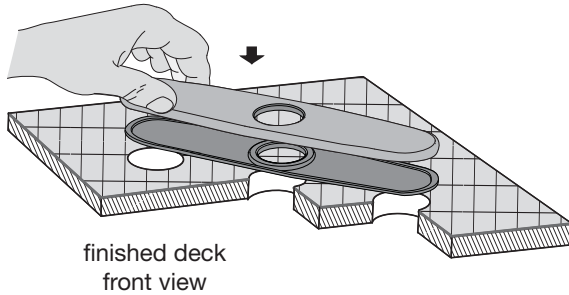
Step 5
 Connect water supply lines

Installation Instructions

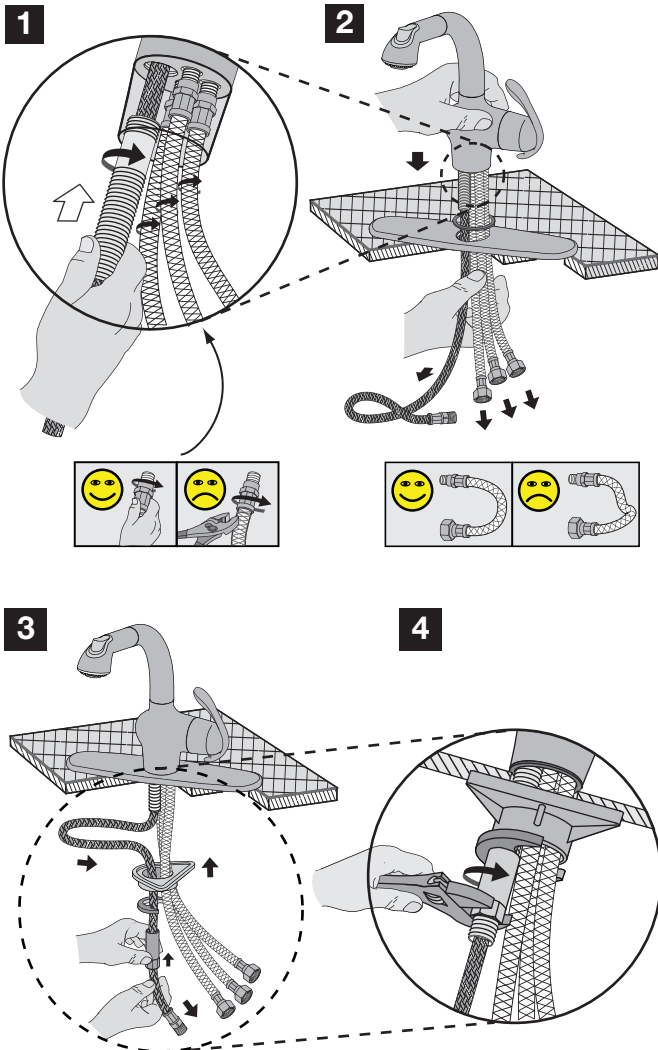
Caution: If replacing an older faucet ensure water supply is turned OFF before removing and then turn faucet handles ON to relieve water pressure.

Step 1 Place deck plate over mounting hole

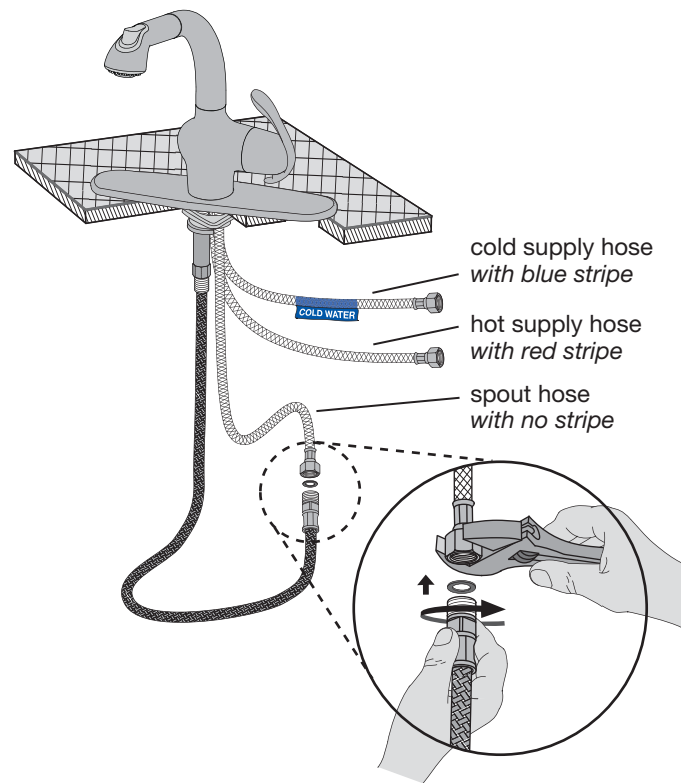
Typically used to cover existing holes when faucet is being replaced. Install as required.



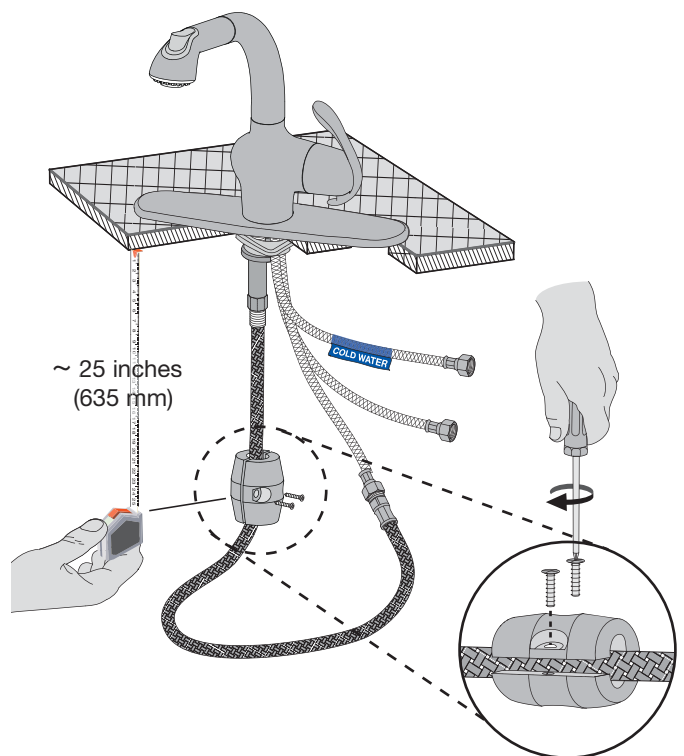
Step 2 Attach faucet to deck



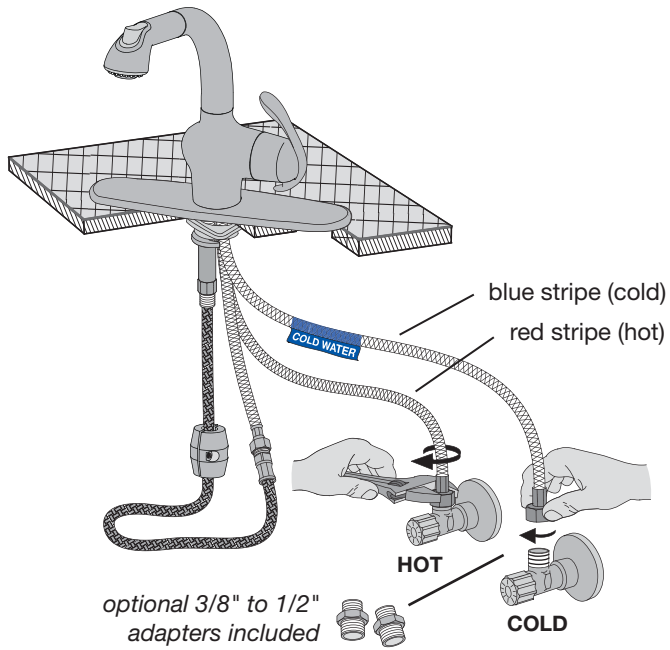
Step 3 Connect pull-out spout hose



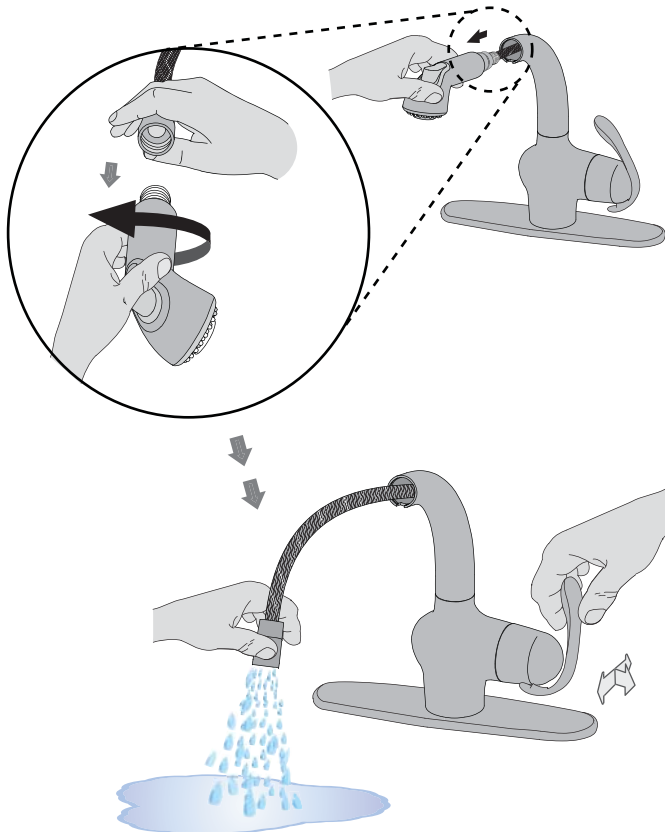
Step 4 Attach counterweight



Step 5 Connect water supply lines



Step 6 Flush supply lines and check for leaks

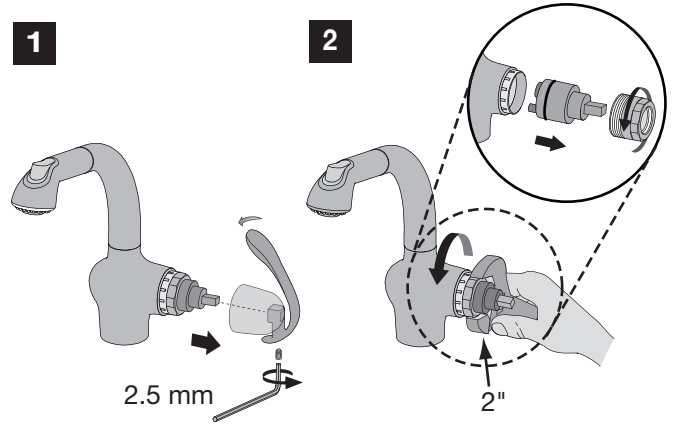


Care of faucet finish

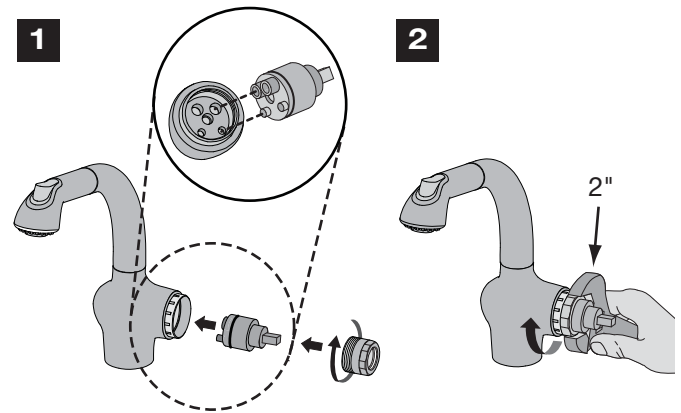
Clean finish area by using mild soap and water or non-abrasive cleaner and then rinse immediately. A non-abrasive wax may be used to preserve finish area.

Valve cartridge replacement

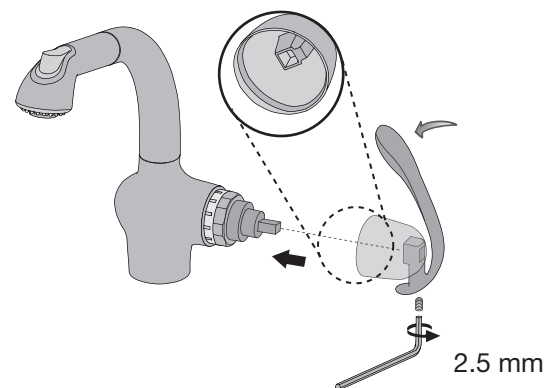
Removing handle, collar and cartridge



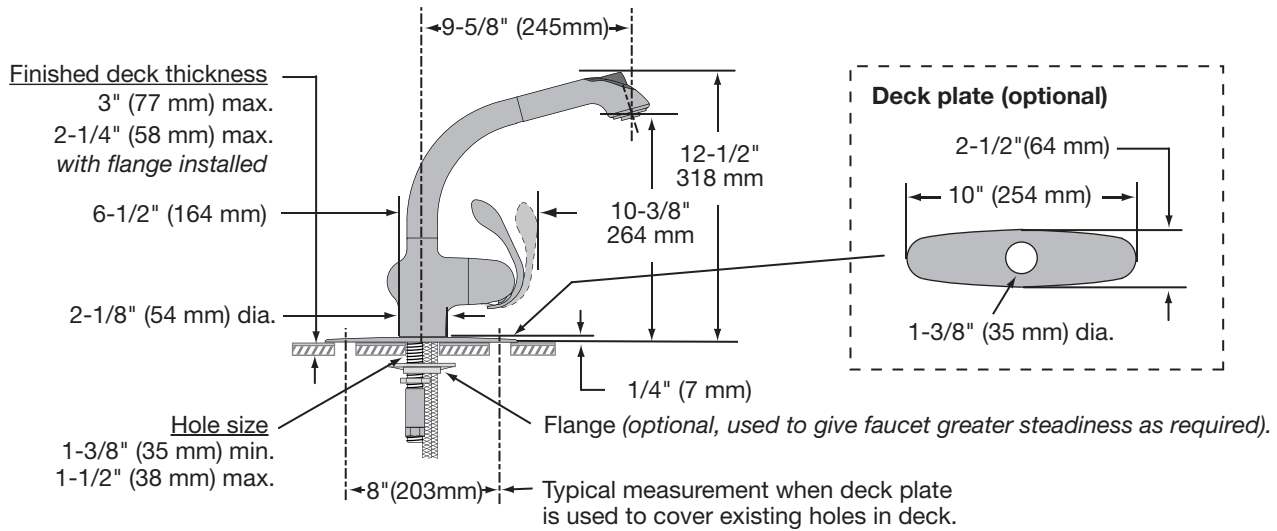
Replacing cartridge



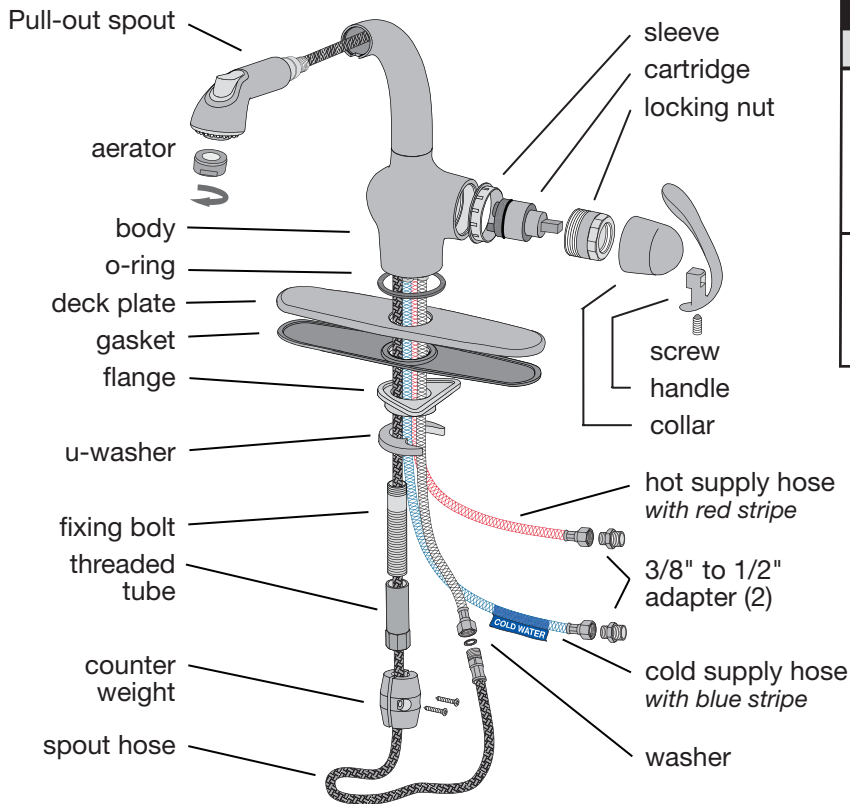
Replace collar and handle



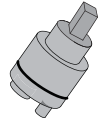

Dimensions *Forza Kitchen Faucet, S-2640*



Parts Assembly *Forza Kitchen Faucet, S-2640*



Replacement Parts

Part Number	Item
KN-269	valve cartridge 
KN-259	wand 

Ordering replacement parts:

Symmons customer service: (800) 796-6667,
 (781) 848-2250 M-F 8:00 am - 7:30 pm EST
 Symmons distributors: www.symmons.com