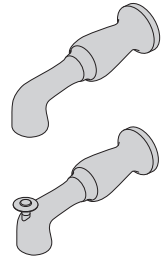


542TS, 542TSD
Degas® Tub Spout Series

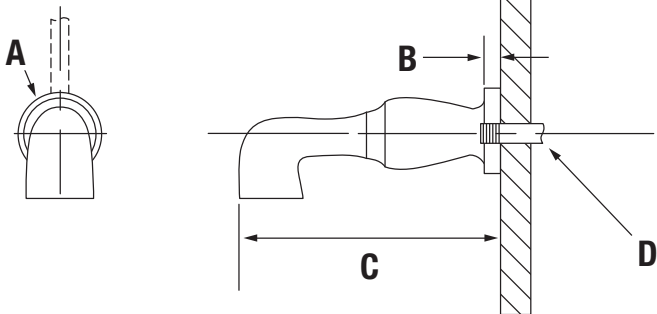
Operation & Maintenance Manual



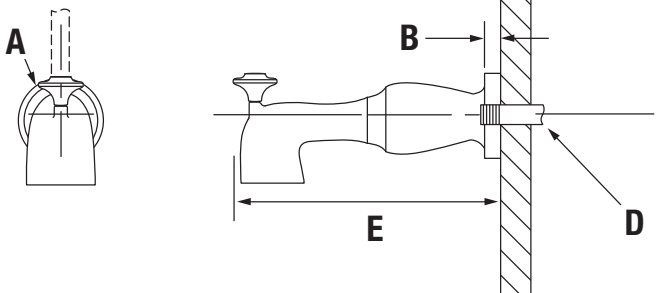
Model Numbers	Specifications
<input type="checkbox"/> 542TS <i>Degas Non-Diverter Tub Spout</i>	8" diverter tub spout (542TS) and 8 1/8" non-diverter tub spout (542TSD) made from brass materials plated in standard polished chrome finish.
<input type="checkbox"/> 542TSD <i>Degas Diverter Tub Spout</i>	
Modifications	Warranty
<input type="checkbox"/> -ORB <i>Oil rubbed bronze</i>	Limited Lifetime - to the original end purchaser in consumer installations. 5 Years - for commercial installations. Refer to www.symmons.com/warranty for complete warranty information.
<input type="checkbox"/> -STN <i>Satin nickel finish</i>	
Note: Append appropriate -suffix to model number.	

Dimensions

542TS



542TSD



Measurements	
A	Ø 2 1/2", 64 mm
B	1/2", 13 mm
C	8 1/8", 206 mm
D	1/2"-14 NPT
E	8", 203 mm

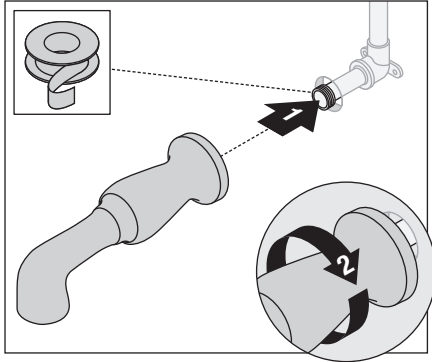
Required for Installation	
Teflon Tape	

Note: Dimensions are subject to change without notice.

542TS, 542TSD
Degas® Tub Spout Series
Operation & Maintenance Manual

Installation

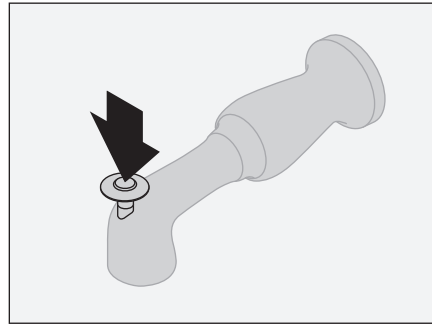
- 1) Install tub spout to stub out pipe. Turn clockwise to secure.



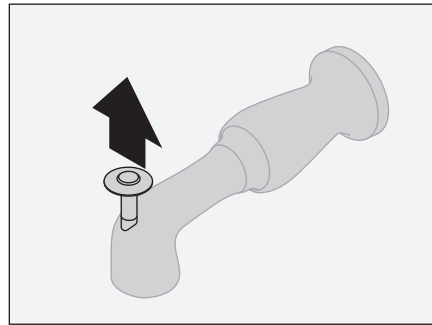
Diverter Control

Note: 542TSD only.

- 1) Diverter lever in down position for tub spout operation.



- 2) Diverter lever in up position for shower operation.



Care and Cleaning

- 1) Clean finished trim area with a soft cloth using mild soap and water or a non-abrasive cleaner and then quickly rinse with water.

⚠ WARNING: This product can expose you to chemicals including lead, which is known to the state of California to cause cancer, birth defects, or other reproductive harm. For more information, go to www.P65Warnings.ca.gov.