

**YORKVILLE™ FloWise® RIGHT HEIGHT® ELONGATED PRESSURE-ASSISTED TOILET 1.1 gpf / 4.2 Lpf**

- 2878.100**
  - Vitreous china
  - **Floor-mounted, back-outlet toilet**
  - High Efficiency, Ultra Low-consumption (1.1 gpf/4.2 Lpf)
  - EverClean® surface inhibits the growth of stain and odor-causing bacteria, mold, and mildew on the surface
  - Meets EPA WaterSense® criteria
  - Elongated 16-1/2" high bowl rim for accessible applications
  - Pressure-assisted siphon jet flush action
  - Fully-glazed 2-1/8" trapway
  - 10 x 12" water surface area
  - Close-coupled Flushometer tank\*
  - Metal chrome trip lever
  - Speed Connect® tank/bowl coupling system
  - Sanitary dam on bowl
  - 4 bolt caps
  - 100% factory flush tested

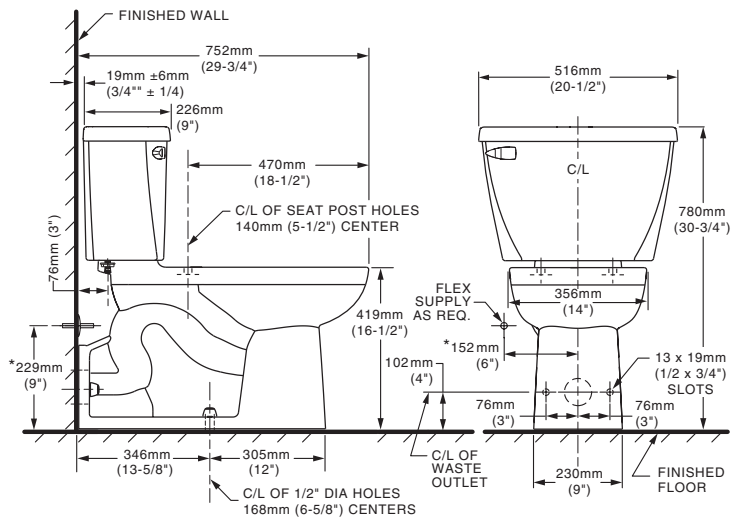
- 3703.100** Elongated 16-1/2" high bowl with 4 bolt caps
- 3703.001** Same as above, Universal Bowl
- 4142.100** Flushometer tank complete with coupling components

**Nominal Dimensions:**  
752 x 516 x 780mm (29-3/4" x 20-1/2" x 30-3/4")

Fixture only, seat and supply by others  
Recommended working pressure range  
25 psi - 80 psi

- Alternate Configurations Available:**
- 4142.601** Tank and tank cover only with tank cover locking device
  - 4142.801** Tank and tank cover only with right hand trip lever
  - 4142.901** Tank complete with right hand trip lever and tank cover locking device

- Compliance Certifications - Meets or Exceeds the Following Specifications:**
- ASME A112.19.2-2008/CSA B45.1-08 for Vitreous China Fixtures
  - US EPA WaterSense® Specification for HET's



**NOTES:**  
WASTE OUTLET SEAL RING MUST BE NEOPRENE OR GRAPHITE-FELT (WAX RING NOT RECOMMENDED). SUPPLY NOT INCLUDED WITH FIXTURE AND MUST BE ORDERED SEPARATELY. DISTANCE FROM FLOOR TO CLOSET FLANGE CENTERLINE (ROUGH-IN) MUST BE 4" (102 MM) WITH FLANGE SURFACE FLUSH TO 1/16" (1.5MM) MAX. BEYOND FINISHED WALL. \* DIMENSION SHOWN FOR LOCATION OF SUPPLY IS SUGGESTED. FOR ADDITIONAL INFORMATION REFER TO INSTALLATION INSTRUCTIONS SUPPLIED.

**IMPORTANT:** Dimensions of fixtures are nominal and may vary within the range of tolerances established by ASME A112.19.2-2008 / CSH B45.1-08. These measurements are subject to change or cancellation. No responsibility is assumed for use of superseded or voided pages.

**To Be Specified:**

- Color:  White  Bone  Linen
- Seat: American Standard #5901.100.020
- Supply with Stop:



**MEETS THE AMERICANS WITH DISABILITIES ACT GUIDELINES AND ANSI A117.1 REQUIREMENTS FOR ACCESSIBLE AND USABLE BUILDING FACILITIES - CHECK LOCAL CODES.**